

REGISTER NOW TO
ACTIVATE YOUR

5 YEAR
WARRANTY*

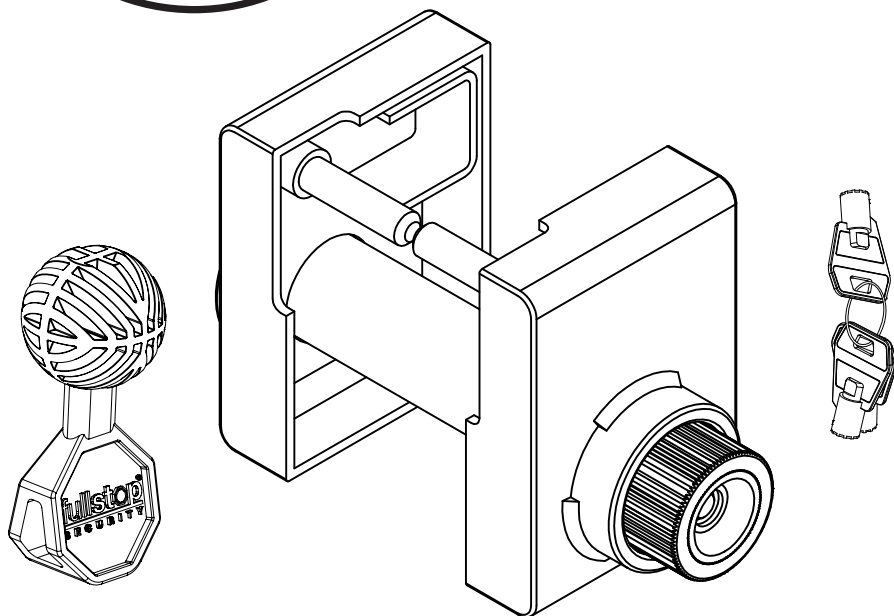
www.purpleline.co.uk
01473 601200

SARACEN

Designed to fit **WINTERHOFF**

Hitch Lock

PRODUCT CODE: **FHL200**



PARTS IDENTIFICATION

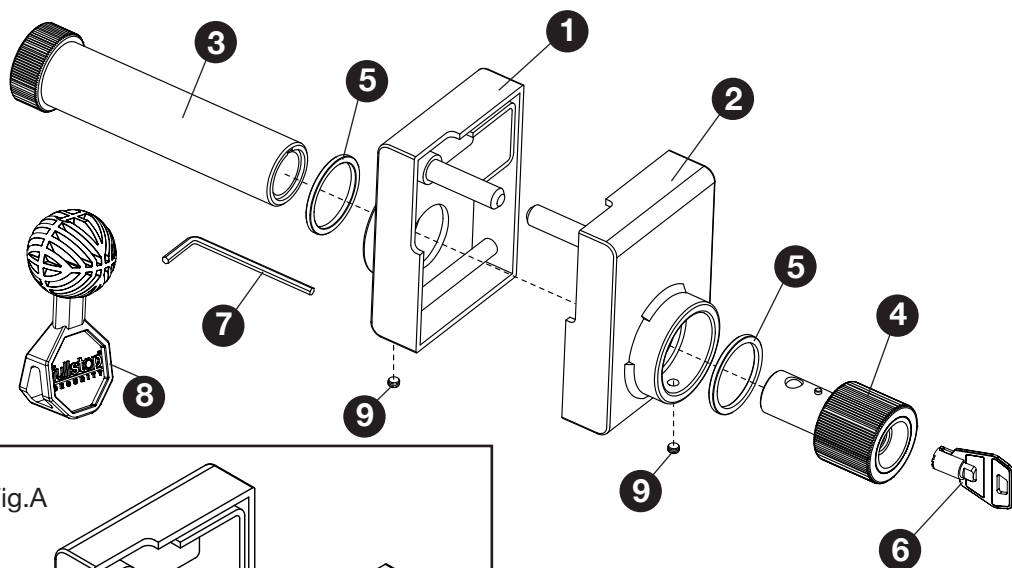
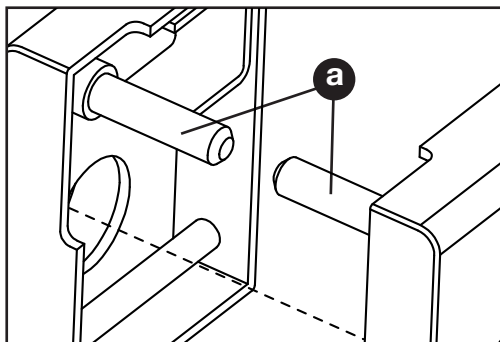
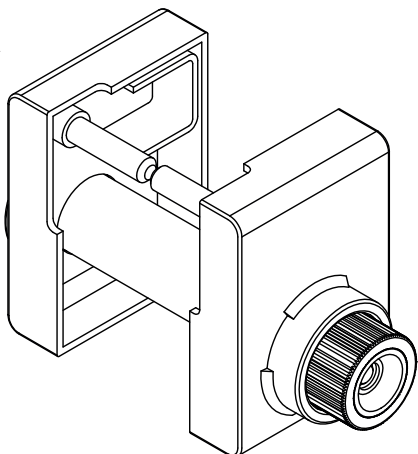


Fig.A



- | | |
|------------------------|----------------------|
| 1. Side A | 6. Key (x3) |
| 2. Side B | 7. Hex Key |
| 3. Female Lock Portion | 8. Security Tow Ball |
| 4. Male Lock Portion | 9. Hex Grub Screws |
| 5. Spacer (x2) | |

Please store your keys in a safe place and remember to register within 14 days of purchase, either by returning your fully completed registration card, or online at www.purpleline.co.uk/product-registration



INSTALLATION

The FullStop® Saracen Winterhoff Hitch Lock can be fitted when your vehicle is hitched or unhitched, but should never be fitted during transit. It is against the law in the UK to tow whilst using a Hitch Lock.

FITTING WHEN HITCHED

The Saracen Winterhoff Hitch Lock is supplied ready assembled as two parts for easy fitment.

To install, simply locate the metal pin (a) on Side A (1) into the aperture on the side of the Winterhoff WS3000 stabiliser hitch. Insert the key into the lock and rotate 90° clockwise to unlock. Then locate the pin (a) on Side B (2) into the other side of the hitch and align the end of the male lock portion (4) into the end of the Female Lock Portion (3). Once aligned you should be able to turn the key 90° anti-clockwise and remove the key. Once installed the assembled Hitch Lock will fit together as shown in Fig.A. Your Hitch Lock is now fitted correctly.

If you cannot get the male and female lock portions to lock together it may be necessary to remove one or both of the spacers (5) this will allow the two locking portions to meet while giving a greater distance between the two side faces (A&B).

To remove a spacer use the supplied hex key (7) and undo one or both of the small hex grub screws (9); this releases the male and female lock portions to enable removal of the spacer(s).

FITTING WHEN UN-HITCHED

Installation of the Saracen Winterhoff Hitch Lock when fitting onto an unhitched caravan, is identical except that the included Security Tow Ball (8) must be inserted into your coupling to inhibit the caravan being hitched onto a vehicle.

MAINTENANCE

Grease the lock face and ball bearings before first use, with a light oil such as 3-IN-ONE or equivalent.

Thereafter spray any moving parts of the lock body with a light oil such as 3-IN-ONE or equivalent every eight weeks.

NOTE

It is highly recommended that a secondary security device (such as a wheel clamp) should be used to inhibit theft by some unconventional form of towing. Visit www.purpleline.co.uk for details of other products in the Fullstop® Security range.



PRODUCT SPECIFICATION

FHL200				
Weight (kg)	Height (mm)	Width (mm)	Depth (mm)	Keys Supplied
2kg	95mm	75mm	160mm	3

Please store your keys in a safe place and remember to register your product.

Registration is quick and simple, go to www.purpleline.co.uk/product-registration

Please register within 14 days of purchase. Please retain your original purchase receipt.

Disclaimer

If used properly, your FullStop® product will be an effective deterrent. However, nothing can stop the efforts of the most determined thief, and to this end no liability is accepted for any loss and/or damage caused by any illegal activity including theft or vandalism. Liability also not accepted for any loss and/or damage arising from misuse, unauthorised repair or alteration and failure to follow the user guide directions. No form of consequential loss what so ever will be accepted.



© Copyright 2017. Purple Line Limited, Peninsula Business Centre, Wherstead, Suffolk, IP9 2BB, UK

www.purpleline.co.uk

01473 601200

Photographs for illustration purposes only. Actual product may differ slightly.

Purple Line Limited reserve the right to alter product specification without prior notice.